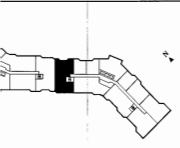


HarbourSide
at Harbour Square
3 bedroom residence
3A

HarbourSide at Harbour Square

3 bedroom
residence
3A
Approx. 2,003 sq. ft.



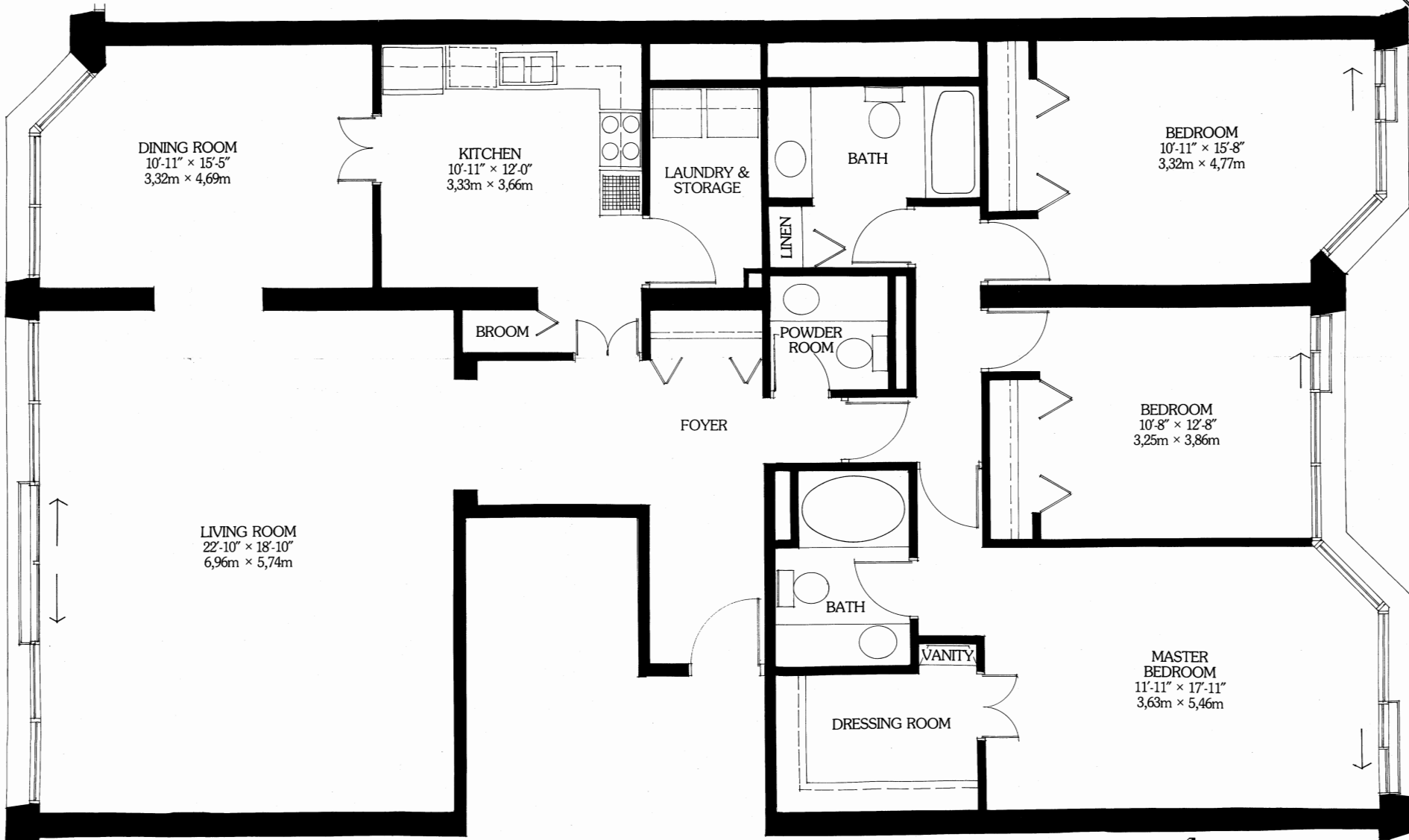
Side at Harbour Square. Toronto's
shored address. Prestigious. Unique,
in concept and living excitement. An
landmark on the shores of Lake Ontario.
Two and three bedroom apartment
units, double and triple level penthouses
and terraced houses. Two of the top
ten set aside for custom building to
specifications. By Campeau Corporation.
The downtown resort community.

ROOM AMENITIES:
entry door with oil rubbed, cast bronze
knob
entry with over-sized tub with marble
and floor
led mirrored vanity
room (excluding IF model)
laundry area (except bachelors)
floor laundry facilities
with illuminated ceiling, furniture finish
cabinets and stainless steel double sinks,
automatic dishwasher, range with oven,
ice-freezer
closets and storage areas
electric heating and cooling with separate
in each major room for total year round
soundproofing from adjacent suites.
and transmission co-efficient rating.
viewer and chain lock on suite entrance

finished in stipple except for
kitchen
covered with off-white latex paint.

COMMON AMENITIES:
stippled health club with two exercise
squash courts, saunas, comfortable
seating
closed swimming pool and lounge with
views of the entire lake and
skyline.
Side Club with kitchen, entertainment
and dance floor
room featuring table tennis, billiard,
and backgammon tables,
and jogging paths in adjacent Harbour-
Square
10th floor cedar deck lounge overlooking
labeled pool.
to the eight great restaurants and lounges
nearby Castle Hillton.

GENERAL AMENITIES:
24 storey lobbies with marble and richly
finished floors, elegant wood paneled walls,
corridors, bronze mirrors, sparkling
cabinets and brass reception desks.
Private terraced roof garden.
Landscaped, lakefront park
to complex.
24 hour valet service, by special arrangement.
security.
24 hour telephone service.
fire detection systems in common areas,
storage and parking garage.
24 hour parking facilities.
Limousine service from the Harbour
Hilton.
storage area.
24 hour minibus service to Union Station
24 hour parcel with non-rush hour service to
the building.



Approx 2,003 sq.ft.

campeau
Scale: 1/2" = 1'-0"
As a result of Campeau Corporation's continual program of product research and improvement, these plans and specifications
are subject to revision without notice. In addition, special design features on some models may require slight variations in floor plans
and specifications. Your Campeau representative will be pleased to go over up-to-date plans and specifications on each model.